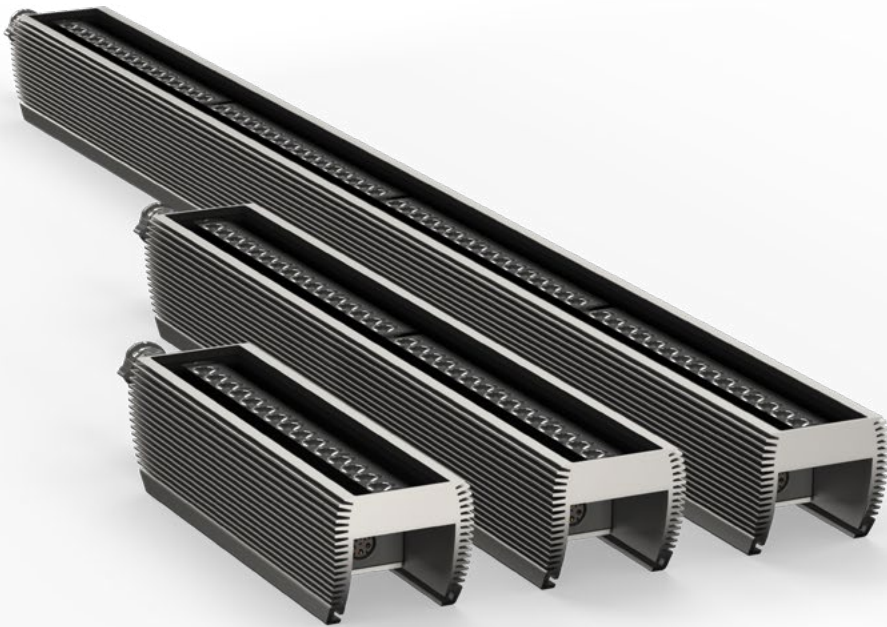


DMX PROTOCOL

i-1 LINEAR RGBW



CONTENT

3 PIXEL SEGMENTS

3 DMX MODES

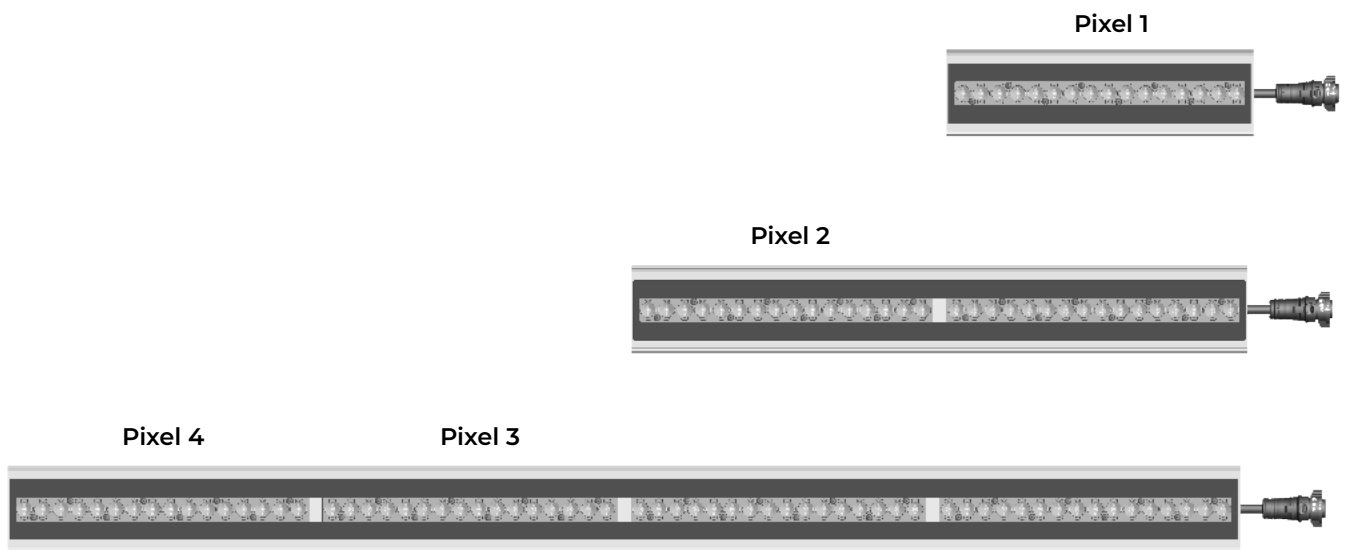
- 3 3 Channel RGB
- 3 4 Channel Raw
- 4 6 Channel CTC (Default Mode)
- 4 8 Channel RAW
- 5 10 Channel CTC
- 6 3*/6**/12 Channel Pixel

7 NOTES

- 7 Note 1
- 7 Note 2

7 CTC CHART

PIXEL SEGMENTS



DMX MODES

3 CHANNEL RGB

CHANNEL	NAME	DMX		DMX PERCENTAGE		DESCRIPTION	INFO
1	Red 1	0	255	0,0%	100,0%	Fade 0% → 100% Red	
2	Green 1	0	255	0,0%	100,0%	Fade 0% → 100% Green	
3	Blue 1	0	255	0,0%	100,0%	Fade 0% → 100% Blue	

4 CHANNEL RAW

CHANNEL	NAME	DMX		DMX PERCENTAGE		DESCRIPTION	INFO
1	Red	0	255	0,0%	100,0%	Fade 0% → 100% Red	
2	Green	0	255	0,0%	100,0%	Fade 0% → 100% Green	
3	Blue	0	255	0,0%	100,0%	Fade 0% → 100% Blue	
4	White	0	255	0,0%	100,0%	Fade 0% → 100% White	

6 CHANNEL CTC (DEFAULT MODE)

CHANNEL	NAME	DMX		DMX PERCENTAGE		DESCRIPTION	INFO
1	Shutter	0	7	0,0%	2,7%	Closed	Snap
		8	15	3,1%	5,9%	Open	Snap
		16	151	6,3%	59,2%	Strobe	Fast → Slow
		152	175	59,6%	68,6%	Pulse up	Slow → Fast
		176	199	69,0%	78,0%	Pulse down	Slow → Fast
		200	244	78,4%	95,7%	Random	Slow → Fast "Note 2" on page 7
		245	255	96,1%	100,0%	Open	Snap
2	Intensity	0	255	0,0%	100,0%	0% → 100% Intensity	Fade
3	CTC	0	0	0,0%	0,0%	5600 Kelvin	
		1	4	0,4%	1,6%	Raw	
		5	255	2,0%	100,0%	2000K → 10000K	See "CTC Chart" on page 7
4	Red	0	255	0,0%	100,0%	Fade 0% → 100% Red	
5	Green	0	255	0,0%	100,0%	Fade 0% → 100% Green	
6	Blue	0	255	0,0%	100,0%	Fade 0% → 100% Blue	

8 CHANNEL RAW

CHANNEL	NAME	DMX		DMX PERCENTAGE		DESCRIPTION	INFO
1+2	Red	0	65535	0,0%	100,0%	Fade 0% → 100% Red	
3+4	Green	0	65535	0,0%	100,0%	Fade 0% → 100% Green	
5+6	Blue	0	65535	0,0%	100,0%	Fade 0% → 100% Blue	
7+8	White	0	65535	0,0%	100,0%	Fade 0% → 100% White	

10 CHANNEL CTC

CHANNEL	NAME	DMX		DMX PERCENTAGE		DESCRIPTION	INFO
1	Shutter	0	7	0,0%	2,7%	Closed	Snap
		8	15	3,1%	5,9%	Open	Snap
		16	151	6,3%	59,2%	Strobe	Fast → Slow
		152	175	59,6%	68,6%	Pulse up	Slow → Fast
		176	199	69,0%	78,0%	Pulse down	Slow → Fast
		200	244	78,4%	95,7%	Random	Slow → Fast "Note 2" on page 7
		245	255	96,1%	100,0%	Open	Snap
2+3	Intensity	0	65535	0,0%	100,0%	0% → 100% Intensity	Fade
4	CTC	0	0	0,0%	0,0%	5600 Kelvin	
		1	4	0,4%	1,6%	Raw	
		5	255	2,0%	100,0%	2000K → 10000K	See "CTC Chart" on page 7
5+6	Red	0	65535	0,0%	100,0%	Fade 0% → 100% Red	
7+8	Green	0	65535	0,0%	100,0%	Fade 0% → 100% Green	
9+10	Blue	0	65535	0,0%	100,0%	Fade 0% → 100% Blue	

3*/6**/12 CHANNEL PIXEL

CHANNEL	NAME	DMX		DMX PERCENTAGE		DESCRIPTION	INFO
1	Red 1	0	255	0,0%	100,0%	Fade 0% → 100% Red	*
2	Green 1	0	255	0,0%	100,0%	Fade 0% → 100% Green	*
3	Blue 1	0	255	0,0%	100,0%	Fade 0% → 100% Blue	**
4	Red 2	0	255	0,0%	100,0%	Fade 0% → 100% Red	**
5	Green 2	0	255	0,0%	100,0%	Fade 0% → 100% Green	**
6	Blue 2	0	255	0,0%	100,0%	Fade 0% → 100% Blue	
7	Red 3	0	255	0,0%	100,0%	Fade 0% → 100% Red	
8	Green 3	0	255	0,0%	100,0%	Fade 0% → 100% Green	
9	Blue 3	0	255	0,0%	100,0%	Fade 0% → 100% Blue	
10	Red 4	0	255	0,0%	100,0%	Fade 0% → 100% Red	
11	Green 4	0	255	0,0%	100,0%	Fade 0% → 100% Green	
12	Blue 4	0	255	0,0%	100,0%	Fade 0% → 100% Blue	

*

If marked with 1 asterisk, this is where the 1-foot i-1 L is controllable, the 2- and 4-foot versions have more channels, but also use these channels.

**

If marked with 2 asterisks, this is where the 2-foot i-1 L is controllable, the 4-foot version has all the channels in the chart.

NOTES

NOTE 1

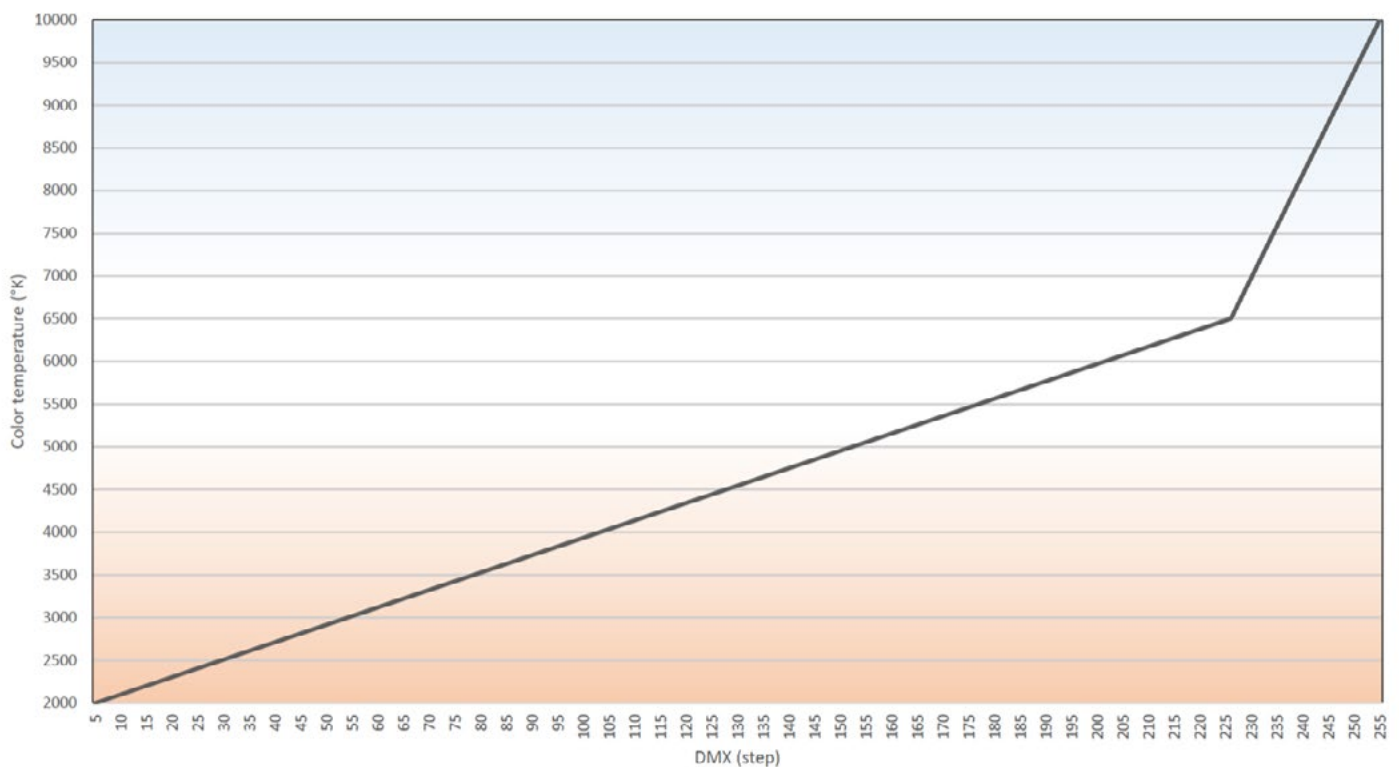
- **CTC RGB** allows RGBW mixing with CTC control over white on the Red, Green and Blue channels (4000K White LED is controlled via RGB color engine).
- **CTC RGBW** allows RGBW mixing with CTC control over white on the Red, Green, Blue and White channels (4000K White LED is controlled via RGBW color engine).
- **CTC RGB+W** allows RGB mixing with CTC control over white on the Red, Green and Blue channels, plus independent control over 4000K White LED on the White channel (4000K White LED is not part of the color engine).
- **HSI** and **CMY** modes use the Red, Green and Blue channels for the color mix.
- **xy** mode does not allow CTC control.

CTC RGB, CTC RGBW, CTC RGB+W, HSI, and CMY modes can be combined with the CTC, Color Path, Macro, and Plus/Minus Green channels.

NOTE 2

Segment functions only affect the 2–4-foot fixtures.

CTC CHART





SGM LIGHT A/S

Sommervej 23

8210 Aarhus V

Denmark

Tel: +45 70 20 74 00

info@sgmlight.com

www.sgmlight.com